

Temperature Scan Pro – Monitoring System

PEACE OF MIND

Remote monitoring, reporting and exception alerting of environmental data has never been so affordable.

CENTRALIZED DATA

End-point data is collected and consolidated into a centralized database format which allows for reporting, monitoring and analysis.

CUSTOMER SERVICE

We pride ourselves on first class professional customer support and service. We will work with you to customize a solution to meet your needs.



The state of the art software solution allows for logging detailed near real-time environmental conditions of the remote end-points. Alerts can be setup to notify or page when there is a value outside of a specified threshold allowing critical exceptions to be caught before disaster strikes.

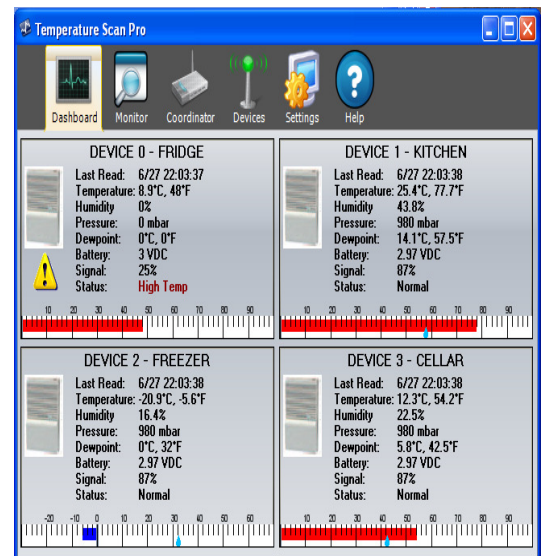
The system allows for scheduled reporting via email which allows for distributed reporting and monitoring. Setting up the system is easily done within the application which can be loaded onto a PC which acts as the service communicating with the centralized coordinator that receives all remote end-point readings.

The Temperature Scan Pro monitoring system allows you to wirelessly monitor up to thirty-two end points.

Monitoring, logging and reporting of temperature, humidity and barometric pressure are features of the Temperature Scan Pro system.

Remote end points are powered by two AA or D batteries which allow for a truly non-tethered solution and ultimate flexibility.

The remote end-points communicate back to a single coordinator which communicates with the packaged application to enable advanced capabilities.



ULTIMATE FLEXIBILITY

With up to thirty-two customizable end-points, the options and applications are limitless. No matter what your need or environment, Temperature Scan Pro can be built to meet your needs.

ECONOMICAL

While many solutions offering the same functionality exist, ours is the priced for the entry level consumer while offering advanced features, functionality and customizability of the more expensive solutions.

Product Details



The system supports total control with the end points you choose based on your application. The end-points come in a variety of flavors:

- Battery powered
- AC powered
- High gain / weather proof housings
- Thermocouples
- Probes & Internal sensors

System Requirements

- Windows PC with .NET Framework 2.0
- Internet Connectivity
- Ethernet Connectivity between PC and the Coordinator (can be through switch, hub or crossover)

Communication between the logging PC where the software is installed and the base coordinator is done over a standard 10/100 Ethernet connection.

All connectivity between the coordinator and the end-points is done over 802.11 transmission. Ranges will vary based on the environment.

Customizable to Meet Your Needs

We understand that monitoring needs vary based on the application from client to client. With the Temperature Scan Pro, the system is fully configurable to support a number of external attachments to suit nearly any environment.

The base offering can be upgraded to support external probes in addition to probes supporting humidity and barometric pressure sensors should you need to monitor these environmental metrics.

Don't hesitate to contact us today at service@temperaturescan.com for more information and any questions you have.



Temperature Scan
<http://temperaturescan.com>
service@temperaturescan.com
Fishers, IN 46038

Copyright (2010) © All Rights Reserved.